

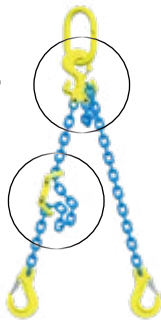
# GrabiQ: Components with multiple functions

Innovative designs that combine several clever functions in one component



## Midgrab, MIG

Instant mounting, positioning, shortening on any part of the chain.



## C-grab Duo, CGD

Built in shortening function.



## Master Grab, MG

- All-in-one compact top link.
- Every chain leg can instantly be altered.
- Using the built in shortening function, you can alter between a straight lift to a looped sling in a matter of seconds.

## Fewer components & lighter assembly

### GrabiQ™ 4-leg sling with shortening function



- (1) Master link
- (2) C-grab Duos

**Total: 3 components**  
with GrabiQ system



- (1) Master link
- (2) Sub links
- (8) Berglok chain couplers
- (4) Grab hooks

**Total: 15 components**  
with traditional system

### GrabiQ™ 2-leg sling with shortening function



- (1) Master Grab Duo

**Total: 1 component**  
with GrabiQ



- (1) Master link
- (4) Berglok chain couplers
- (2) Grab hooks

**Total: 7 components**  
with traditional system

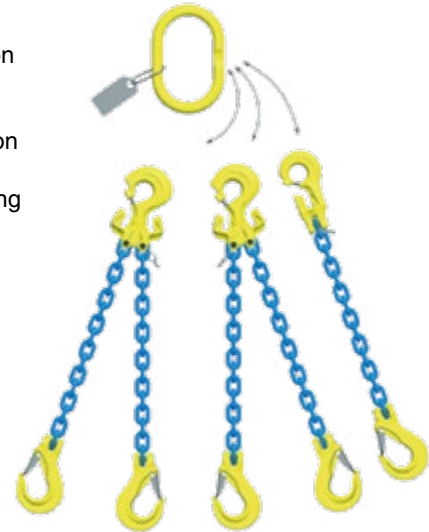
## Less is more with FlexiLeg

Thanks to the unique features of our GrabiQ product range, we offer solutions that increase the flexibility in lifting operations even further. Our FlexiLeg solution allows you to have an instant leg change on site.

With one single master link in combination with five Flexi-legs, we offer a solution that replaces four complete traditional slings, a total of ten legs. In addition, FlexiLeg also gives you the opportunity to modify the chain sling to different lifting operations, whenever and wherever it is needed.

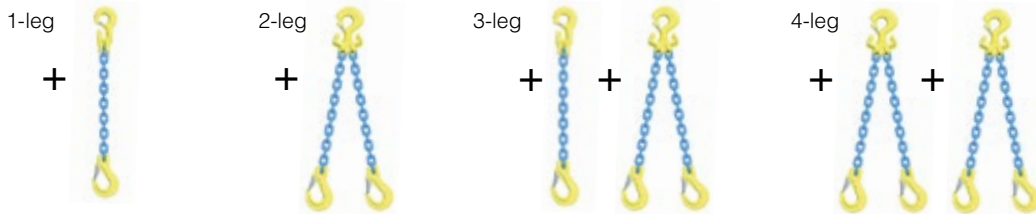
### The benefits of instant leg-change

- Enables the user to change slings, leg by leg.
- Makes the sling lighter and easier to work with.
- Sling legs that are not being used can easily be removed, thereby increasing safety at the work site.
- The quantity of sling material is greatly reduced, providing cost savings.
- The chain sling can be reconfigured on site, thus increasing efficiency.



GrabiQ FlexiLeg – a total of 5 legs replaces the total of 10 legs with the old traditional system.

6



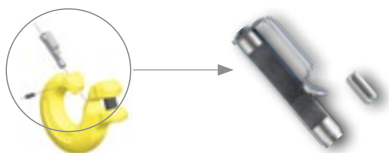
### Traditional System



### Related Products

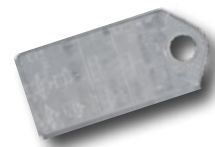
#### QuickPin – For safe exchange of sling legs

- Fits all C-components (CL, CLD, CG, CGD)
- Instant close/open function, no tools needed
- Easy to retrofit
- Made of stainless steel for long product life span



#### FlexiTag – For every GrabiQ sling

- Specially designed for FlexiLeg
- Fits all other GrabiQ slings
- WLL and chain size pre-stamped for 1 – 4 legs
- Leg angle 30/45 degree shown in contour
- Made of stainless steel for use in all weather conditions



# GrabiQ – solutions for every need

## 1-leg chain slings

### MG1-GBK

Consist of: Master Link MG, Chain KLA, Safety Hook GBK



Chain Size		WLL (lb)	Total Components Length (in)
(mm)	(in)		
6	-	3300	6.73
8	5/16"	5700	11.65
10	3/8"	8800	14.21
13	1/2"	15000	17.83
16	5/8"	22600	20.75

4:1 Design Factor

### MG1-EGKN

Type: Master Link MG, Chain KLA, Hook with Latch EGKN



Chain Size		WLL (lb)	Total Components Length (in)
(mm)	(in)		
6	-	3300	9.09
8	5/16"	5700	10.28
10	3/8"	8800	13.03
13	1/2"	15000	16.06
16	5/8"	22600	18.94

4:1 Design Factor

### TG1-GBK

Master Link MF, C-grab CG, Chain KLA, Safety Hook GBK



Chain Size		WLL (lb)	Total Components Length (in)
(mm)	(in)		
6	-	3300	7.87
8	5/16"	5700	13.62
10	3/8"	8800	16.69
13	1/2"	15000	19.84
16	5/8"	22600	24.45

4:1 Design Factor

## 2-leg chain slings

### TG1-EGKN

Consists of: Master Link MF, C-grab CG, Chain KLA, Hook with Latch EGKN



Chain Size		WLL (lb)	Total Components Length (in)
(mm)	(in)		
6	-	3300	11.26
8	5/16"	5700	13.46
10	3/8"	8800	16.34
13	1/2"	15000	19.96
16	5/8"	22600	24.57

4:1 Design Factor

### MGD2-EGKN

Consists of: Master Link MGD, Chain KLA, Latch Hook EGKN



Chain Size		WLL (lb)			Total Components Length (in)
(mm)	(in)	$\beta$ 60°	$\beta$ 45°	$\beta$ 30°	
6	-	5500	4625	3300	9.06
8	5/16"	9900	8100	5700	10.28
10	3/8"	15200	12400	8800	13.03
13	1/2"	26000	21200	15000	16.06
16	5/8"	39100	32000	22600	18.94

4:1 Design Factor

### MGD2-GBK

Consists of: Master Link MGD, Chain KLA, Safety Hook GBK



Chain Size		WLL (lb)			Total Components Length (in)
(mm)	(in)	$\beta$ 60°	$\beta$ 45°	$\beta$ 30°	
6	-	5500	4625	3300	9.25
8	5/16"	9900	8100	5700	11.65
10	3/8"	15200	12400	8800	14.21
13	1/2"	26000	21200	15000	17.83
16	5/8"	39100	32000	22600	20.75

4:1 Design Factor

### TG2-GBK

Consists of: Master Link MF, C-grab Duo CGD, Chain KLA, Safety Hook GBK



Chain Size		WLL (lb)			Total Components Length (in)
(mm)	(in)	$\beta$ 60°	$\beta$ 45°	$\beta$ 30°	
6	-	5500	4625	3300	11.46
8	5/16"	9900	8100	5700	14.41
10	3/8"	15200	12400	8800	17.48
13	1/2"	26000	21200	15000	21.02
16	5/8"	39100	32000	22600	26.42

4:1 Design Factor

### TG2-EGKN

Consists of: Master Link MF, C-grab Duo CGD, Chain KLA, Latch Hook EGKN

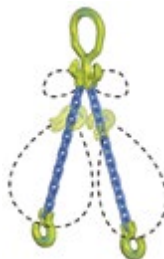


Chain Size		WLL (lb)			Total Components Length (in)
(mm)	(in)	$\beta$ 60°	$\beta$ 45°	$\beta$ 30°	
6	-	5500	4625	3300	11.26
8	5/16"	9900	8100	5700	13.46
10	3/8"	15200	12400	8800	16.34
13	1/2"	26000	21200	15000	19.96
16	5/8"	39100	32000	22600	24.61

4:1 Design Factor

### MGD2-CL

Consists of: Master Link MGD, Chain KLA, C-lok CL



Chain Size		WLL (lb)			Total Components Length (in)
(mm)	(in)	$\beta$ 60°	$\beta$ 45°	$\beta$ 30°	
6	-	5500	4625	3300	7.36
8	5/16"	9900	8100	5700	9.06
10	3/8"	15200	12400	8800	11.22
13	1/2"	26000	21200	15000	14.13
16	5/8"	39100	32000	22600	16.89

4:1 Design Factor

## 3-leg chain sling

### TG3-GBK

Consists of: Master Link MF, C-grab CG, C-grab Duo CGD, Chain KLA, Safety Hook GBK



Chain Size		WLL (lb)			Total Component Length (in)
(mm)	(in)	$\beta$ 60°	$\beta$ 45°	$\beta$ 30°	
6	-	8400	6800	4850	12.24
8	5/16"	14800	12100	8500	15.43
10	3/8"	22900	18700	13200	18.66
13	1/2"	39000	31800	22500	23.78
16	5/8"	58700	47900	33900	26.77

4:1 Design Factor

### TG3-EGKN

Consists of: Master link MF, C-grab CG, C-grab Duo CGD, Chain KLA, Latch Hook EGKN



Chain Size		WLL (lb)			Total Component Length (in)
(mm)	(in)	$\beta$ 60°	$\beta$ 45°	$\beta$ 30°	
6	-	8400	6800	4850	12.05
8	5/16"	14800	12100	8500	14.06
10	3/8"	22900	18700	13200	17.48
13	1/2"	39000	31800	22500	22.01
16	5/8"	58700	47900	33900	24.96

4:1 Design Factor

## 4-leg chain sling

### TG4-GBK

Consists of: Master Link MF, C-grab Duo CGD, Chain KLA, Safety Hook GBK



Chain Size		WLL (lb)			Total Component Length (in)
(mm)	(in)	$\beta$ 60°	$\beta$ 45°	$\beta$ 30°	
6	-	8400	6800	4850	12.24
8	5/16"	14800	12100	8500	15.43
10	3/8"	22900	18700	13200	18.66
13	1/2"	39000	31800	22500	23.78
16	5/8"	58700	47900	33900	26.77

4:1 Design Factor

### TG4-EGKN

Consists of: Master link MF, C-grab Duo CGD, Chain KLA, Latch Hook EGKN



Chain Size		WLL (lb)			Total Component Length (in)
(mm)	(in)	$\beta$ 60°	$\beta$ 45°	$\beta$ 30°	
6	-	8400	6800	4850	12.05
8	5/16"	14800	12100	8500	14.06
10	3/8"	22900	18700	13200	17.48
13	1/2"	39000	31800	22500	22.01
16	5/8"	58700	47900	33900	24.96

4:1 Design Factor

## Grade 10 chain slings

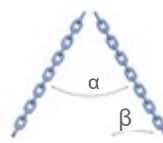
Working Load Limits in tonnes for chain slings grade 10

Based on EN 818-4:2008 WLL +25%

1-leg



2-leg



3- and 4-leg



Chain Size (mm)	Chain Size (in)	WLL (lb)	$\beta$ 60°	$\beta$ 45°	$\beta$ 30°	$\beta$ 60°	$\beta$ 45°	$\beta$ 30°
			$\alpha$ 60°	$\alpha$ 90°	$\alpha$ 120°	$\alpha$ 60°	$\alpha$ 90°	$\alpha$ 120°
6	-	3300	5500	4625	3300	8400	6800	4850
7	9/32"	4300	7400	6100	4300	11200	9100	6400
8	5/16"	5700	9900	8100	5700	14800	12100	8500
10	3/8"	8800	15200	12400	8800	22900	18700	13200
13	1/2"	15000	26000	21200	15000	39000	31800	22500
16	5/8"	22600	39100	32000	22600	58700	47900	33900
20	3/4"	35300	61100	49900	35300	91700	74900	52950
22	7/8"	42700	74000	60400	42700	110900	90600	64000
26	1"	59700	103100	84100	59500	155600	126600	89250
32	1-1/4"	88160	152700	124600	88160	229000	186950	132200

4:1 Design Factor. Working Load Limits are based on equally loaded and disposed sling legs.