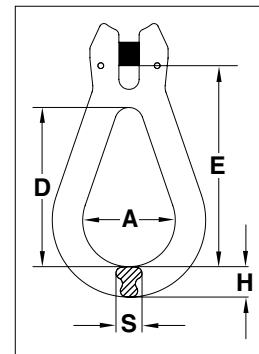


A-1370



- Forged alloy steel — Quenched & Tempered.
- Individually proof tested to 2.5 times the Working Load Limit.
- Proof test certification shipped with each link.
- Each link has a Product Identification Code (PIC) for material traceability, along with the size and the name Crosby in raised letters.
- Suitable for use with Grade 100 and Grade 80 chain.



A-1370 Reeving Link

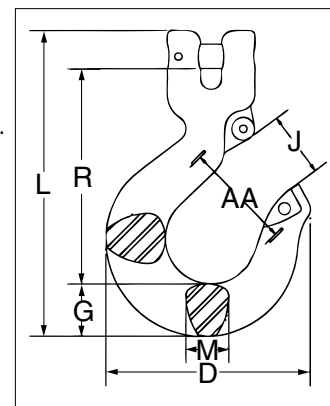
Chain Size		Working Load Limit (lb)	Stock No.	Weight Each (lb)	Dimensions (in)				
(in)	(mm)				A	D	E	H	S
1/4-5/16	7-8	5700	1012000	0.57	1.54	2.66	3.54	0.63	0.39
3/8	10	8800	1012009	1.10	1.93	3.37	4.25	0.67	0.55
1/2	13	15000	1012018	2.43	2.46	4.25	5.43	0.83	0.71
5/8	16	22600	1012027	5.62	3.11	5.47	7.09	1.20	1.00

4:1 Design Factor.

L-1339



- Forged alloy steel — Quenched & Tempered.
- Individually Proof Tested to 2-1/2 times the Working Load Limit with certification.
- Each hook has a Product Identification Code (PIC) for material traceability, along with the size and the name Crosby.
- Hoist hooks incorporate QUIC-CHECK® deformation and angle indicators.
- Low profile hook tip.
- New integrated latch (S-4320/S-4339) meets the world standard for lifting.
 - Heavy duty stamped latch interlocks with the hook tip.
 - High cycle, long life spring.
 - When secured with the proper cotter pin through the hole in the tip of hook, meets the intent of OSHA Rule 1926.1431(g) and 1926.1501(g) for personnel lifting.
- Suitable for use with Grade 100 and Grade 80 chain.
- Fatigue rated at 1-1/2 times the Working Load Limit at 20,000 cycles.



L-1339 Clevis Sling Hook

Chain Size		Working Load Limit (lb)	Hook ID Code	Stock No.	Weight Each (lb)	Dimensions (in)							S-4320 Repl. Latch Stock No.	S-4339 Repl. Latch Stock No.
(in)	(mm)					D	G	J	L	M	R	AA		
-	6	3200	DA	1049103	0.64	2.86	0.73	0.93	4.21	0.63	2.95	1.50	1096325	-
1/4	7	4300	HA	1049112	1.58	3.86	1.04	1.19	5.67	0.75	3.97	2.00	1096468	-
5/16	8	5700	HA	1049121	1.57	3.86	1.04	1.19	5.67	0.75	3.95	2.00	1096468	-
3/8	10	8800	IA	1049130	2.58	4.38	1.19	1.53	6.75	1.00	4.71	2.50	1096515	-
1/2	13	15000	JA	1049149	5.28	5.60	1.44	1.78	8.38	1.17	5.89	3.00	1096562	-
5/8	16	22600	KA	1049158	9.81	6.76	1.89	2.41	10.21	1.44	6.97	4.00	1096609	-
3/4	18-20	35300	-	1049167	18.3	8.31	2.83	2.69	13.07	1.97	8.00	4.50	-	1048714
7/8*	22-23*	44100	-	1049176	24.6	9.17	3.07	3.05	13.98	1.97	8.76	5.00	-	1048732

4:1 Design Factor.

*7/8 in (22-23 mm) size does not have cam, latch attaches to unique pin.