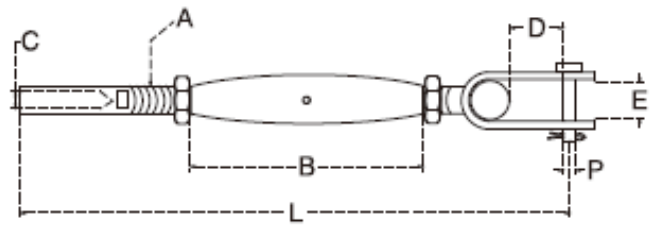


TOGGLE AND SWAGE STUD TURNBUCKLE

S.S. T316 Machined & Stamp



Item	A (Thread)	B	C (Cable)	D	E	p	L	To Use With
312S-TW-0502	3/16"	2-5/16"	3/32"	0.35"	0.25"	0.18"	6-1/4"	7805S-02
312S-TW-0603-HS*	1/4"	3-3/4"	1/8"	0.66"	0.40"	0.23"	7"	7805S-HS-03
312S-TW-0605-HS*	1/4"	3-3/4"	3/16"	0.66"	0.40"	0.23"	7-1/8"	7805S-HS-05
312S-TW-0603	1/4"	3-3/4"	1/8"	0.66"	0.40"	0.23"	7"	7805S-03
312S-TW-0605	1/4"	3-3/4"	3/16"	0.66"	0.40"	0.23"	7-1/8"	7805S-05
312S-TW-0805	5/16"	4-3/16"	3/16"	0.66"	0.40"	0.23"	8"	7805S-05
312S-TW-0806	5/16"	4-3/16"	1/4"	0.66"	0.40"	0.23"	8-1/4"	-
312S-TW-1005	3/8"	4-3/4"	3/16"	0.70"	0.52"	0.36"	9-1/8"	-
312S-TW-1006	3/8"	4-3/4"	1/4"	0.70"	0.52"	0.36"	9-1/2"	7805S-065
312S-TW-1306	1/2"	6"	1/4"	1.12"	0.53"	0.46"	11-3/4"	-
312S-TW-1308	1/2"	6"	5/16"	1.12"	0.53"	0.46"	12-1/4"	-
312S-TW-1610	5/8"	7-5/8"	3/8"	1.18"	0.76"	0.63"	16-7/8"	-
312S-TW-2013	3/4"	8-3/4"	1/2"	1.20"	0.83"	0.75"	17-1/8"	-

*Hand Swage

THREADED ROD AND SWAGE STUD TURNBUCKLE

S.S. T316 Machined

Item	A (Thread)	B	C (Cable)
312S-RW-0502	3/16"	2-5/16"	3/32"
* 312S-RW-0603-HS	1/4"	3-3/4"	1/8"
* 312S-RW-0605-HS	1/4"	3-3/4"	3/16"
312S-RW-0603	1/4"	3-3/4"	1/8"
312S-RW-0605	1/4"	3-3/4"	3/16"
312S-RW-0805	5/16"	4-3/16"	3/16"
312S-RW-0806	5/16"	4-3/16"	1/4"
312S-RW-1005	3/8"	4-3/4"	3/16"
312S-RW-1006	3/8"	4-3/4"	1/4"
312S-RW-1306	1/2"	6"	1/4"
312S-RW-1308	1/2"	6"	5/16"
312S-RW-1610	5/8"	7-5/8"	3/8"
312S-RW-2013	3/4"	8-3/8"	1/2"
312S-RW-2216	7/8"	10"	5/8"

*Hand Swage

