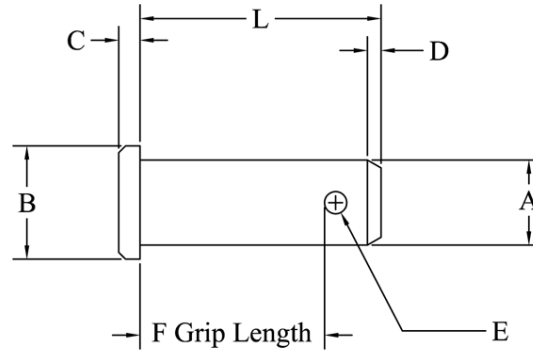




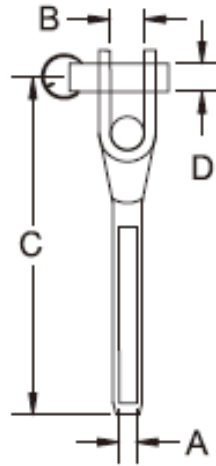
Clevis Pins PI1 Series secures the mating part in the fork fitting.

MADE IN THE USA: YES



Part No.	Fits MS Nos. Indicated	Cable Dia.	A	B	C	D	E	L	F	Lbs. per Piece
PI1-3*	MS20667-2	1/16	3/16	5/16	1/16	3/64	.081	7/16	5/16	.004
PI1-3*	MS20667-3	3/32	3/16	5/16	1/16	3/64	.081	7/16	5/16	.004
PI1-4*	MS20667-4	1/8	3/16	5/16	1/16	3/64	.081	17/32	13/32	.005
PI1-5*	MS20667-5	5/32	1/4	3/8	1/16	3/64	.089	17/32	13/32	.009
PI1-6*	MS20667-6	3/16	5/16	7/16	1/16	3/64	.098	23/32	9/16	.017
PI1-7*	MS20667-7	7/32	5/16	7/16	1/16	1/16	.098	27/32	11/16	.020
PI1-8*	MS20667-8	1/4	3/8	1/2	3/32	1/16	.098	31/32	13/16	.033
PI1-9*	MS20667-9	9/32	7/16	5/8	3/32	1/16	.1405	1-3/32	7/8	.040
PI1-10*	MS20667-10	5/16	7/16	5/8	3/32	1/16	.1405	1-3/32	7/8	.040
PI1-12*	MS20667-12	3/8	1/2	11/16	1/8	5/64	.1405	1-1/8	31/32	.050
PI1-14*	MS20667-14	7/16	9/16	23/32	1/8	5/64	.172	1-7/32	1	.070
PI1-16*	MS20667-16	1/2	5/8	13/16	1/8	5/64	.172	1-5/16	1-1/16	.127

* Denotes Stock Item



Item	A (Cable)	B	C	D	E
7805S-02	3/32"	0.24"	2-5/8"	0.18"	0.35"
7805S-03	1/8"	0.38"	3"	0.23"	0.70"
7805S-04	5/32"	0.38"	3-9/16"	0.30"	0.50"
7805S-05	3/16"	0.40"	4-1/8"	0.23"	0.70"
7805S-06	7/32"	0.55"	5-1/8"	0.46"	0.72"
7805S-065	1/4"	0.50"	5"	0.31"	0.72"
7805S-08	5/16"	0.68"	6-1/2"	0.60"	1.58"
7805S-10	3/8"	0.827"	7-5/16"	0.75"	1.20"
7805S-13	1/2"	0.88"	8"	0.75"	1.80"

Machine or roller swage required.
And swage available for 1/8" & 3/16" cable size